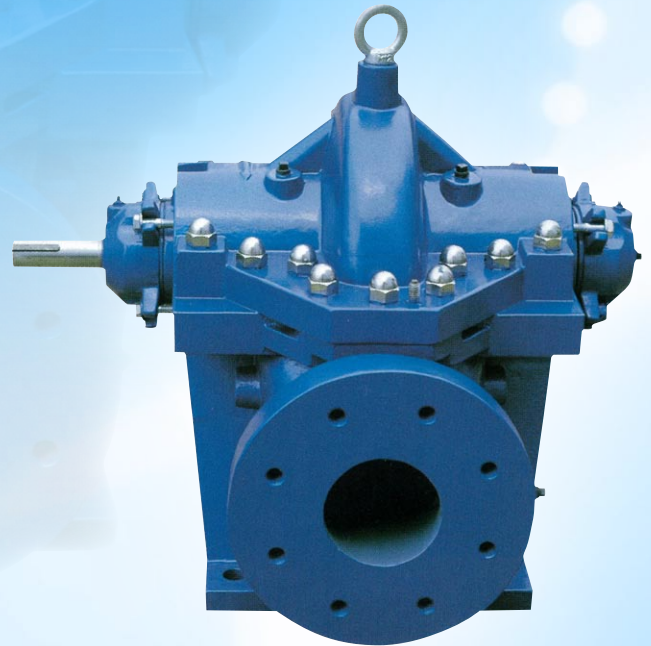


DH

Series Single Stage Double Suction Centrifugal Pumps

TERAL

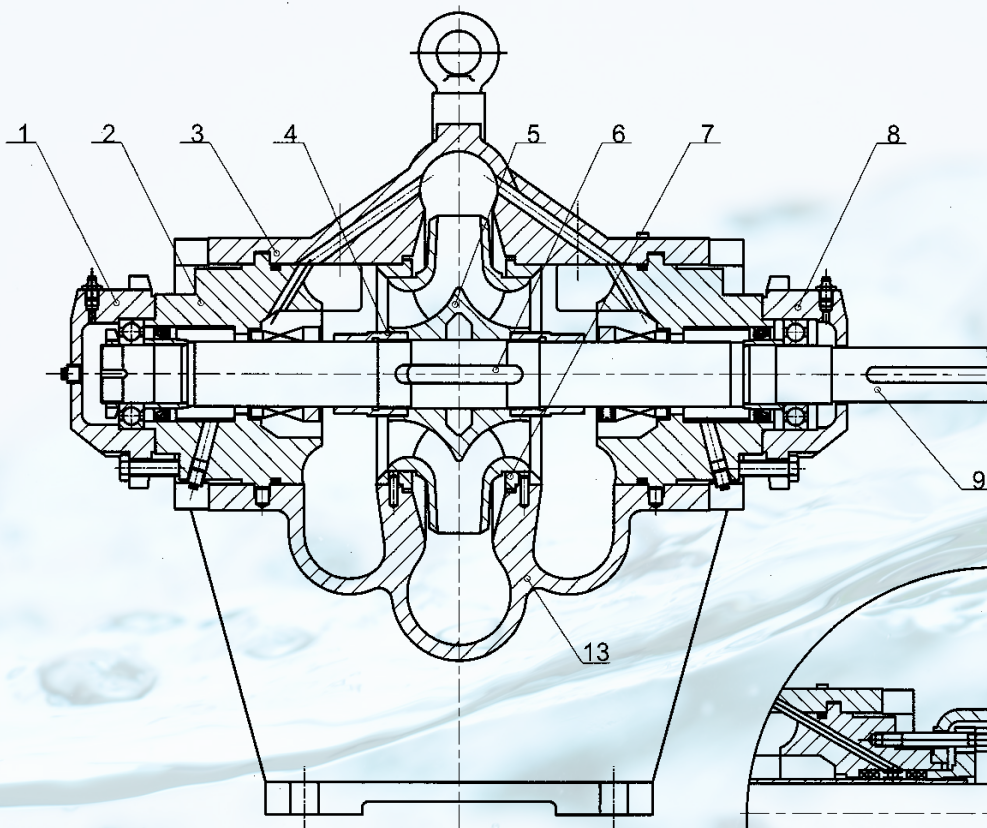


TERAL THAI CO., LTD.

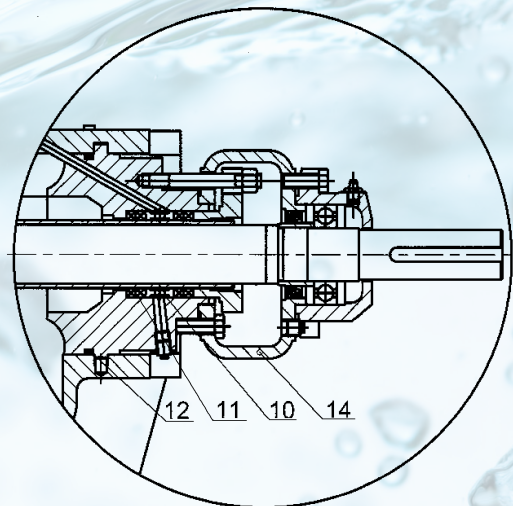
TERAL TRADING & SERVICE CO., LTD.

TERAL GENERAL MACHINE (SHANGHAI) CO., LTD.

TERAL (H.K.) LTD.



Structural drawing



Detail of Gland Packing

1	Left Bearing Housing	2	Seal Housing
3	Upper Casing	4	Impeller Lock Sleeve
5	Impeller	6	Impeller Key
7	Wearing Ring	8	Right Bearing Housing
9	Shaft	10	Lantern Ring
11	Gland Packing	12	O-ring for Casing
13	Lower Casing	14	Spacer

Application

DH series pump is often used in waterworks, irrigation and drainage pumping stations, power stations, industrial water supply system, and fire fighting.

Structural Design

DH series pump is single stage double suction volute centrifugal pump. The motor can be arranged either on the left or right of the pump according to practical situations. The flanges are drilled according to PN16 standard, stipulated by GB4216-84, as well as ISO, DIN, ANSI standard.

Bearing

Ball bearings are lubricated with grease.

Shaft Seal

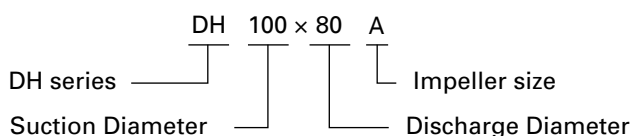
Both gland packing and mechanical seal are available with flushing.

Features

The DH series pumps were combined the advantages of all kinds of split case pumpus. A patent is requested for "The split case pump with new type structure", under patent number ZL 98 227538.2.

- (1). Anti-flexible design tightening shaft sleeve. Motor location can be arranged at both left and right without additional part.
- (2). Special designed flanges to meet the following pressure:
Maximum allowable suction pressure is 1.6MPa.
Maximum allowable working pressure is 2.4MPa.
- (3). Only 3 kinds of shaft can cover all specifications by special designed seal housing and compatible parts.
- (4). Long-life, lower noise, nice appearance.

Model Description



Performance

Discharge Dia.	50 - 250mm
Capacity	Max 1200 m ³ /h
Head	Max 120 m
Working Pressure	Max 24 bar
Working Temperature	Max 75 °C

* Extension models are available on request.

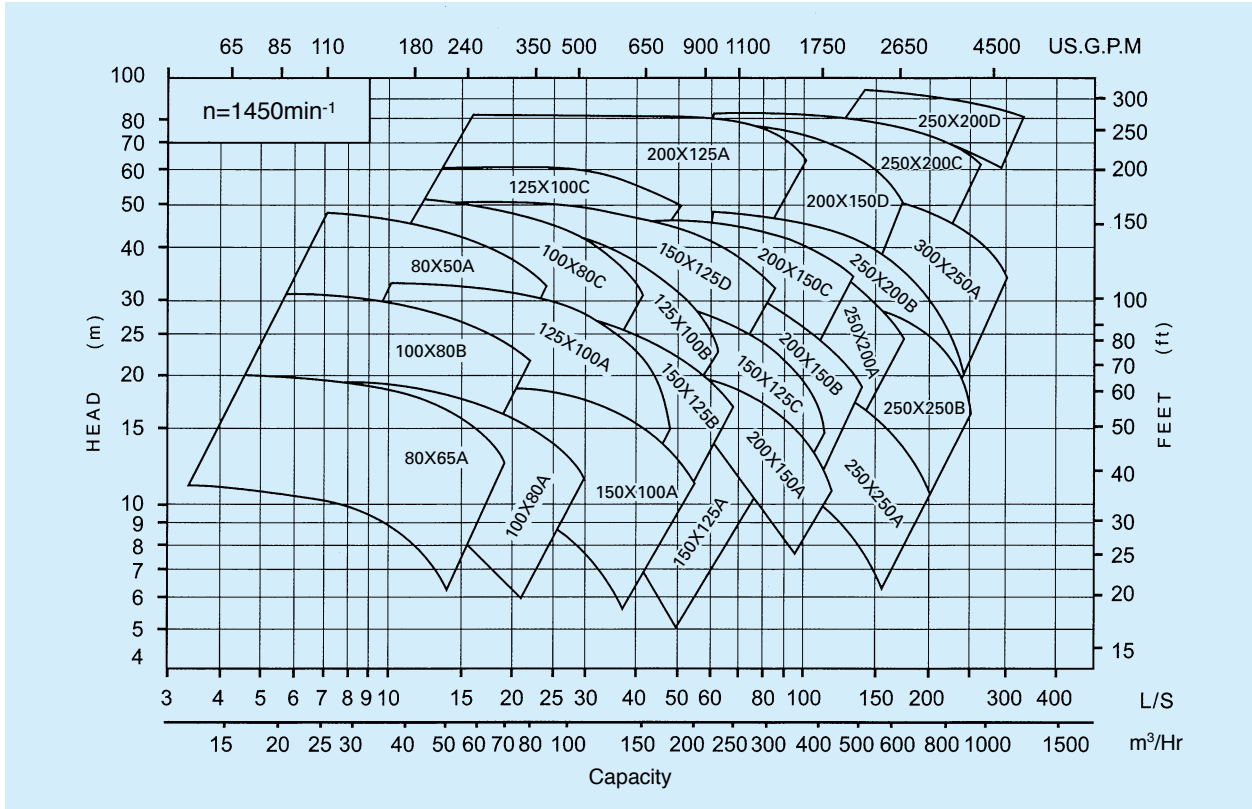
Material

Part Name	Materials Brand
Pump Casing	Cast Iron (FC250)
	Ductile Cast Iron (FCD450)
Impeller	Cast Iron (FC250)
	Bronze (CAC406)
Shaft	SUS420J1
Wearing Ring	Bronze or Cast Iron

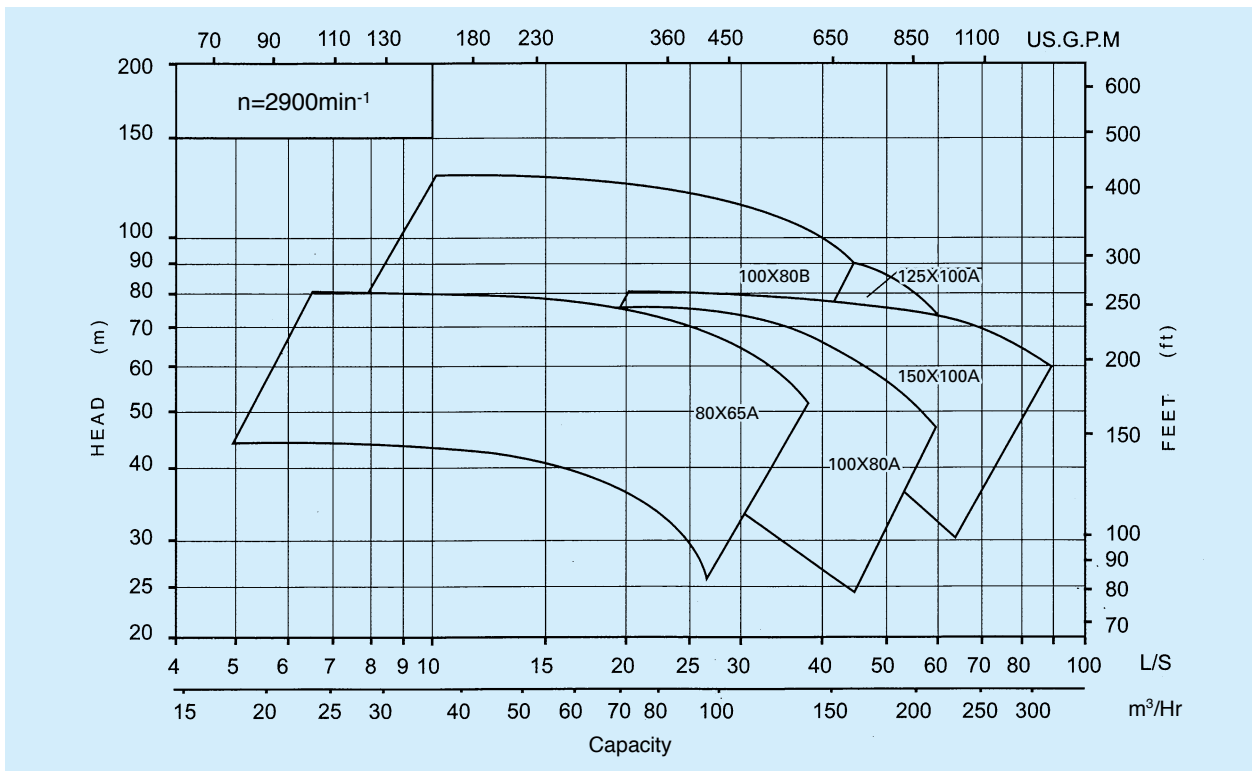
* Other materials are available on request.

DH Series Single Stage Double Suction Centrifugal Pumps

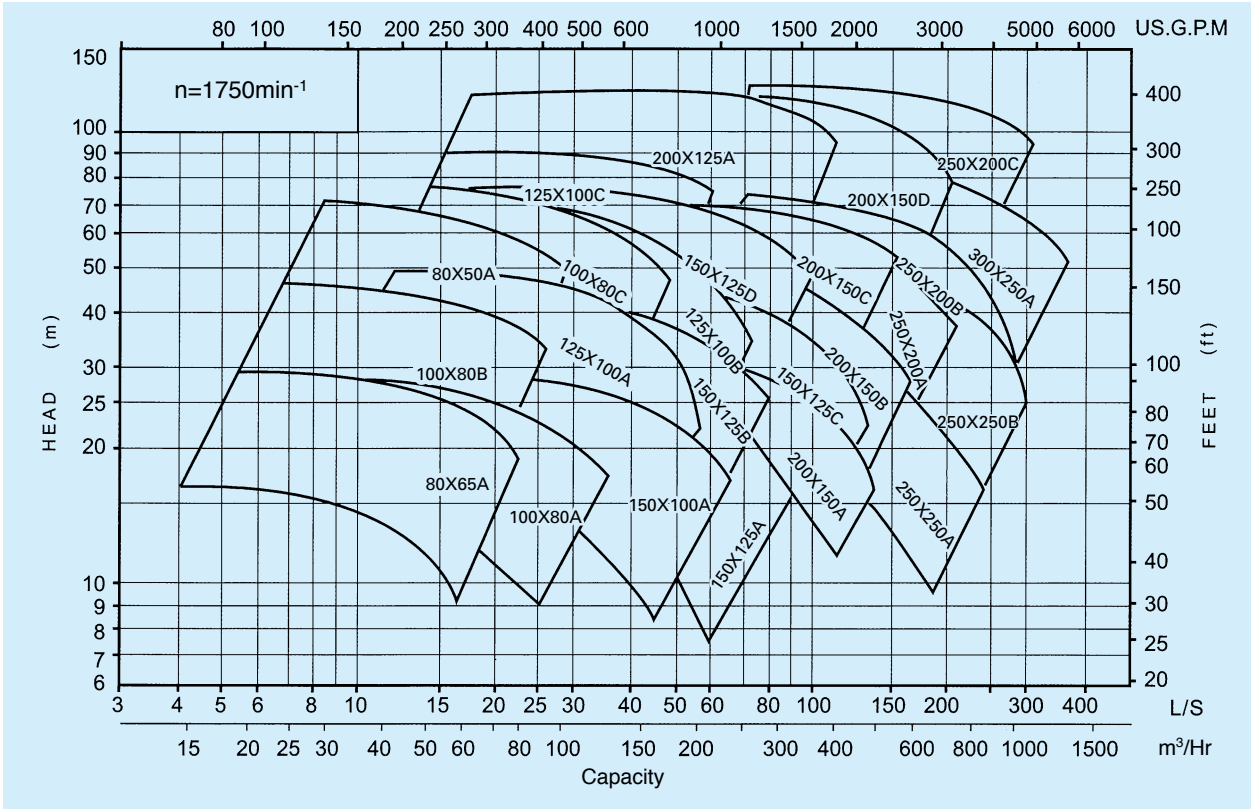
$n=1450\text{min}^{-1}$



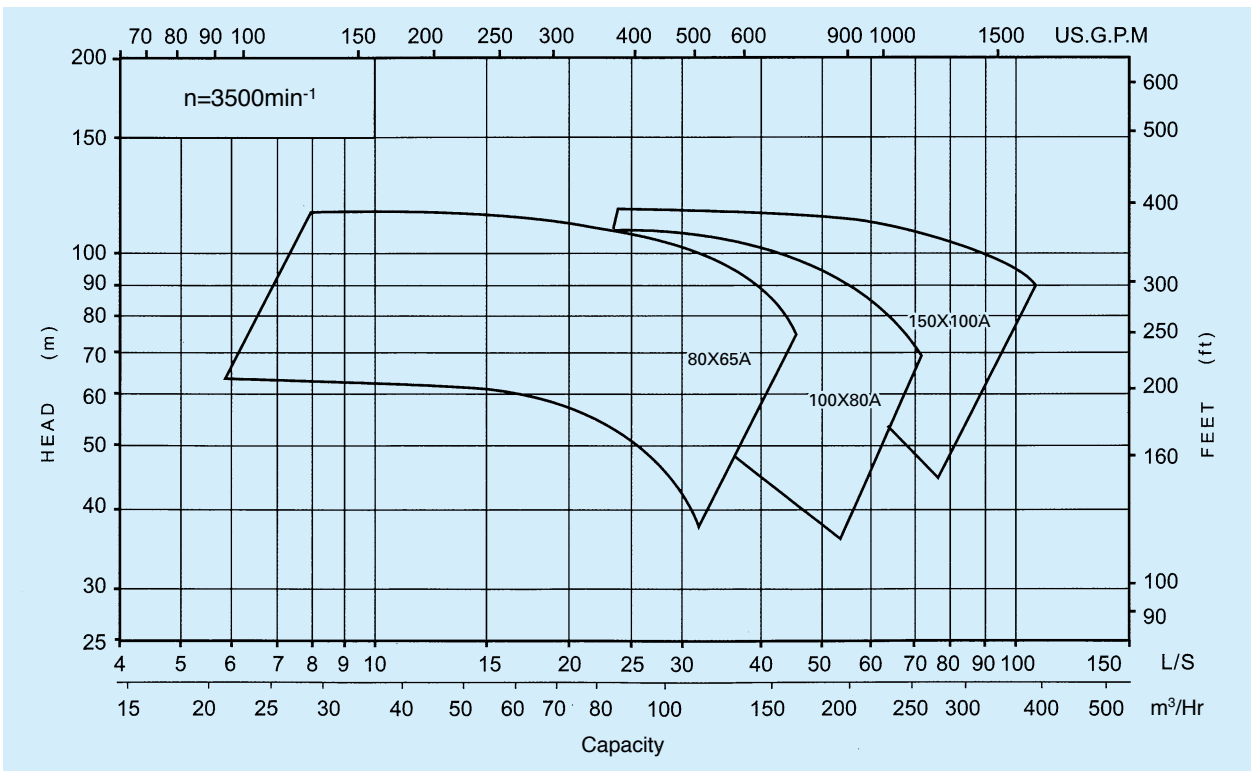
$n=2900\text{min}^{-1}$



n=1750min⁻¹

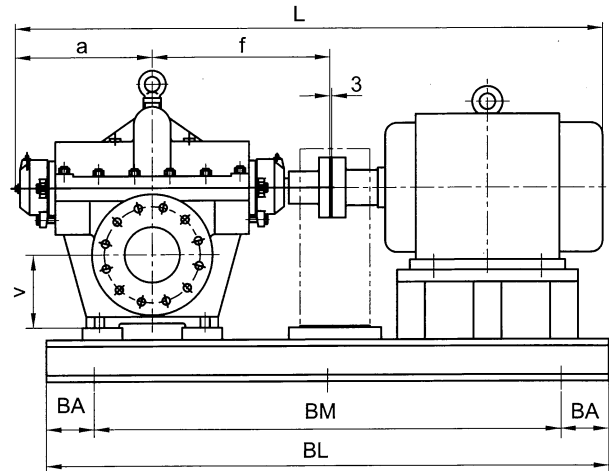
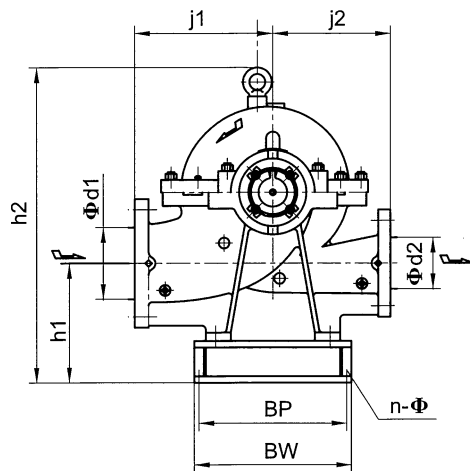


n=3500min⁻¹



* Extension models are available on request.

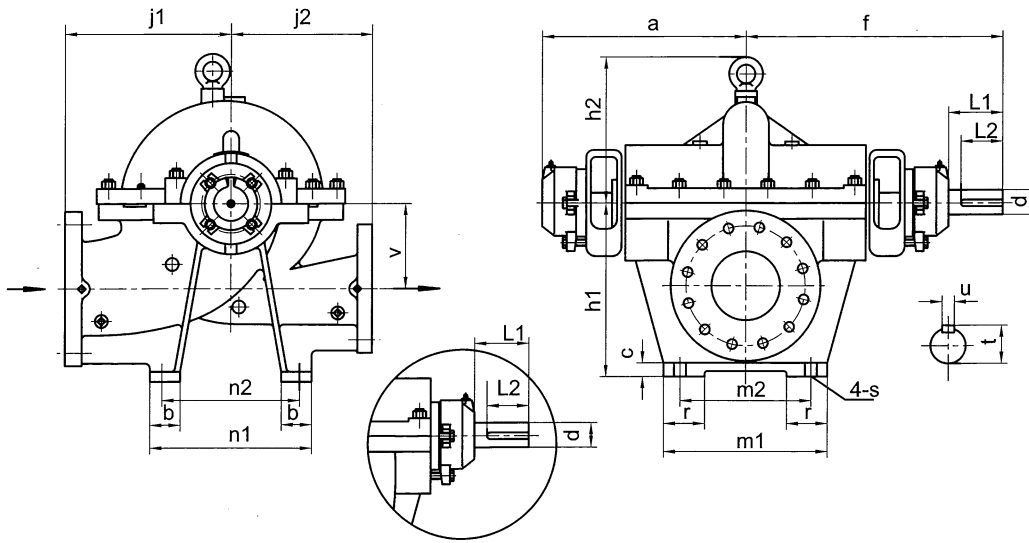
DH Series Single Stage Double Suction Centrifugal Pumps



Installation Dimensions

Unit: mm

DH Type	Pump Dimensions									Motor Dimensions		Base Dimensions							Total WT(kg)	
	Suction Φd1	Discharge Φd2	a	f	j1	j2	h1	v	h2	Power kW	Frame	BA	BM	BL	BP	BW	L	AD		n-Φ
80X65A	80	65	246	314	280	225	240	120	615	4	112M/4P	175	500	850	510	550	1010	200	4-Φ19	243
							265		640	30	200L/2P	125	2*475	1200	510	550	1348	215	6-Φ19	451
100X80A	100	80	246	314	270	230	270	150	648	5	132S/4P	175	600	950	510	550	1003	200	4-Φ19	253
							295		674	45	225M/2P	125	2*525	1300	560	600	1408	215	6-Φ24	513
150X125B	150	125	246	314	310	290	325	180	778	15	160L/4P	125	2*425	1100	560	600	1150	215	6-Φ19	412
100X80B	100	80	246	314	290	275	250	130	674	7.5	132M/4P	175	600	950	510	550	1043	200	4-Φ19	270
							275		699	55	250M/2P	125	2*550	1350	560	600	1493	200	6-Φ24	698
125X100A	125	100	246	314	320	275	270	150	740	15	160L/4P	175	750	1100	510	550	1150	200	4-Φ19	357
							370		839	75	280S/2P	200	2*550	1500	610	650	1563	225	6-Φ29	970
150X100A	150	100	301	401	310	250	315	170	793	11	160M/4P	125	2*450	1150	550	600	1292	215	6-Φ24	395
							390		868	75	280S/2P	200	2*600	1600	610	650	1705	225	6-Φ24	1006
150X125A	150	125	277	345	350	250	305	160	780	11	160M/4P	125	2*425	1100	610	650	1212	230	6-Φ24	422
150X125C	150	125	277	345	335	290	310	165	794	30	200L/4P	125	2*525	1300	610	650	1400	230	6-Φ24	603
200X150A	200	150	277	345	365	310	335	190	838	18.5	180M/4P	125	2*475	1200	610	650	1252	230	6-Φ24	554
250X250A	250	250	346	446	490	340	400	230	985	30	200L/4P	150	2*575	1450	610	650	1570	285	6-Φ24	820
80X50A	80	50	246	314	355	280	250	130	762	15	160L/4P	175	750	1100	560	600	1150	215	4-Φ19	370
100X80C	100	80	246	314	340	350	290	145	790	22	180L/4P	125	2*450	1150	610	650	1227	230	6-Φ24	462
125X100B	125	100	301	401	340	350	295	150	831	30	200L/4P	125	2*550	1350	610	650	1480	230	6-Φ24	600
150X125D	150	125	301	401	400	350	350	180	940	37	225S/4P	150	2*550	1400	610	650	1550	240	6-Φ24	734
200X150C	200	150	301	401	410	350	400	230	1036	55	250M/4P	200	2*575	1550	660	700	1635	285	6-Φ24	1064
125X100C	125	100	301	401	410	350	400	180	1036	45	225M/4P	200	2*575	1450	610	650	1550	285	6-Φ24	1552
200X125A	200	125	371	496	480	450	455	240	1036	90	280M/4P	200	2*575	1450	610	650	1550	285	6-Φ28	1922
250X200B	250	200	371	496	480	420	455	235	1089	75	280S/4P	200	2*675	1750	750	800	1870	285	6-Φ28	1430
300X250A	300	250	371	496	590	420	495	275	1231	132	315M/4P	200	2*775	1950	750	800	2210	325	6-Φ28	1953
200X150D	200	150	371	496	510	450	490	270	1212	132	315M/4P	200	2*775	1950	750	800	2110	305	6-Φ28	1860
250X200C	250	200	371	496	550	450	490	270	1205	200	315L/4P	200	2*800	2000	750	800	2210	325	6-Φ28	2250
250X200D	300	200	385	496	564	524	510	290	1290	315	355L/4P	300	2*860	2320	960	1010	2591	305	6-Φ28	2416



Outline Dimensions

Unit: mm
GP:gland packed MS:mechanical seal

DH Type	Flange		Type	a				f				h1	h2	j1	j2	v	m1	m2	n1	n2	b	c	r	s	t	u	d js6	L1	L2	Weight(kg)	
	in	out		MS	GP	MS	GP	GP	MS	GP	GP																			MS	
80X65A	80	65	1	246	331	314	399	250	254	280	225	130	300	240	350	290	65	25	65	22	28	8	25	70	63	129	118				
100X80A	100	80	1	246	331	314	399	280	249	270	230	130	300	240	350	290	65	25	65	22	28	8	25	70	63	137	126				
150X100A	150	100	2	301	400	401	500	340	289	310	250	170	300	240	350	290	75	25	75	22	45	12	42	100	90	224	203				
150X125A	150	125	1	277	362	345	430	340	278	325	250	180	330	270	400	340	75	25	75	22	28	8	25	70	63	238	226				
200X150A	200	150	1	277	445	345	430	390	298	365	310	200	330	270	400	340	75	25	75	22	28	8	25	70	63	265	255				
250X250A	250	250	2	346	331	446	545	440	375	490	340	210	420	360	400	340	75	25	75	22	45	12	42	100	90	415	390				
150X125B	150	125	1	246	331	314	399	340	308	310	290	160	330	240	350	290	75	25	75	22	28	8	25	70	63	196	185				
100X80B	100	80	1	246	331	314	399	280	274	290	275	150	300	240	350	290	65	25	65	22	28	8	25	70	63	150	135				
125X100A	125	100	1	246	382	314	399	320	299	320	275	170	300	240	350	290	65	25	65	22	28	8	25	70	63	166	175				
150X125C	150	125	1	277	400	345	430	340	309	335	290	175	330	270	400	340	75	25	75	22	28	8	25	70	63	249	238				
200X150B	200	150	2	301	445	401	500	440	337	365	315	235	420	360	400	340	75	25	75	22	45	12	42	100	90	336	315				
250X200A	250	200	2	346	445	446	545	540	381	450	385	285	500	440	510	450	75	25	75	22	45	12	42	100	90	535	515				
250X250B	250	250	2	346	331	446	545	540	391	430	400	250	500	440	510	450	75	25	75	22	45	12	42	100	90	489	460				
80X50A	80	50	1	246	331	314	399	300	315	355	280	170	330	270	400	340	65	25	65	22	28	8	25	70	63	186	175				
100X80C	100	80	1	246	400	314	399	320	330	340	350	175	330	270	400	340	65	25	65	22	28	8	25	70	63	205	194				
125X100B	125	100	2	301	400	401	500	340	346	340	350	190	330	270	450	390	75	25	75	22	45	12	42	100	90	248	227				
150X125D	150	125	2	301	400	401	500	390	360	400	350	210	330	270	450	390	75	25	75	22	45	12	42	100	90	331	310				
200X150C	200	150	2	301	400	401	500	440	349	410	350	210	420	360	400	340	75	25	75	22	45	12	42	100	90	376	355				
250X200B	250	200	3	371	460	496	585	460	411	480	420	225	420	350	510	440	90	28	90	28	59	16	55	127	100	530	550				
300X250A	300	250	3	371	460	496	585	540	466	550	420	265	500	430	560	490	90	28	90	28	59	16	55	127	100	685	660				
125X100C	125	100	3	301	400	401	500	390	362	400	350	210	330	270	450	390	75	25	75	22	45	12	42	100	90	330	315				
200X125A	200	125	3	371	460	496	585	500	425	480	450	260	450	390	560	490	90	28	90	28	59	16	55	127	100	640	615				
200X150D	200	150	3	371	460	496	585	540	446	510	450	270	450	390	560	490	90	28	90	28	59	16	55	127	100	595	570				
250X200C	250	200	3	371	460	496	585	540	445	550	450	270	450	390	560	490	90	28	90	28	59	16	55	127	100	675	647				
250X200D	300	200	3	385	471	496	585	550	490	564	524	290	500	380	720	560	160	35	130	28	59	16	55	127	100	845	820				

We reserve the right to change contents without notice.

Your Dealer

TERAL

TERAL INC.

Overseas Div. 150 Moo 16 Udomsoraryuth Rd., T.Bangkrasan A.Bangpa-In Ayuttaya 13160 THAILAND Tel.+66-3525-8543 Fax.+66-3525-8549
Tokyo Office TERAL Koraku Bldg., 2-3-27, Koraku, Bunkyo-ku, Tokyo, 112-0004, Japan Tel.+81-3-3818-6890 Fax.+81-3-3818-6790
Head Office 230, Moriwake, Miyuki-cho, Fukuyama-city, Hiroshima, 720-0003, Japan Tel.+81-84-955-1111 Fax.+81-84-955-5777
www.teral.net

TERAL THAI CO., LTD.

TERAL TRADING & SERVICE CO., LTD.

150 Moo 16 Udomsoraryuth Rd., T.Bangkrasan, A.Bangpa-In, Ayutthaya 13160 Thailand Tel.+66-3525-8543 Fax.+66-3525-8549

TERAL GENERAL MACHINE (SHANGHAI) CO., LTD.

No.285, Yuan Qu Road(N), Bei Qiao, Min Hang District, Shanghai 201109, China Tel.+86-21-6490-9128 Fax.+86-21-6490-9126

TERAL (H.K.) LTD.

Landwide Commercial Building, 118-120 Austin Road, Tsimshatsui, Kowloon, HONG KONG Tel.+852-2494-0773 Fax.+852-2494-0796